

Four Corners Rifle & Pistol Club Application for New/Renewal Membership (4CRP)

The NRA Pledge: *I certify that I am a citizen of the United States of America and that I am not a member of any organization or group which has in any part of its programs-the attempt to overthrow the Government of the USA or any of its political subdivisions by force or violence; that I have never been convicted of a crime of violence, and if admitted to membership, I will faithfully endeavor to fulfil the obligations of good sportsmanship and good citizenship.*

Four Corners Rifle & Pistol Club Pledge: *I further declare that I support the Constitution of the USA and swear not to support any movement that would close shooting facilities, deny access to public lands, restrict hunting sports, or in any way limit the rights of honest citizens to own firearms in a legal manner.*

NRA Membership Required: For insurance purposes you **MUST** be a MEMBER of the NRA to be a member of Four Corners Rifle and Pistol Club. Your NRA Membership number is required on the next page of this Application.

Types Of 4CRP Memberships (Bylaws Article III)

Any citizen of the US eighteen years of age or over shall be eligible for membership in the Club after subscribing to the following pledges and on payment of the required dues. Anyone becoming a member of the Club shall furnish proof of membership in the National Rifle Association of America, hereinafter referred to as the NRA, or become an NRA member simultaneous with becoming a member of the Club...

1. **Regular member:** Any person who meets the above requirements and is 18 years of age or over. An active Regular member shall be entitled to hold office, vote, and enjoy all privileges and benefits offered by the Club including daytime access to Outdoor Range.
2. **Associate member:** The spouse of a Regular member and meets the above requirements. May use Outdoor Range key without Regular member being present.
3. **Junior member:** A person under the age of 18 who is a child of a Regular member or is a member of the Junior Shooting Program of the Club, and who meets the above requirements. All junior members and shooters under eighteen years of age will shoot/fire under the supervision of a qualified adult.

Safety is of paramount importance to everyone on the range & it is our top priority

How to Become a Member

You may choose how to apply/pay for a new/renewal membership (*Note: Membership Card will be mailed to you*):

- Go to: **Choice Building Supply** (Ace Hardware), 970-565-4245; 525 North Broadway, Cortez
- Go to: **RDF Guns** 970.564.4218; 10933 CR 26 (Off Mildred St, North of SW Memorial Hospital) Cortez
Open Tuesday – Saturday 9:30 AM – 5:30 PM
- Mail this application with payment to: 4CRP, PO Box 101 Cortez, CO 81321. Key and card will be mailed to you
- Attend 4CRP meeting on last Tuesday of month at 6:30 PM at Indoor Range; receive key immediately
- Online at 4CRP website: 4cornersrifleandpistol.com. Key and card will be mailed to you

4CRP always needs volunteers. Please check any areas of interest to you.

<input type="checkbox"/> INDOOR RANGE	<input type="checkbox"/> JUNIOR SHOOTERS
<input type="checkbox"/> OUTDOOR RANGE	<input type="checkbox"/> GUN SHOW
<input type="checkbox"/> HUNTER SIGHT IN	<input type="checkbox"/> 4C WOMEN AT THE RANGE
<input type="checkbox"/> RANGE CLEAN UP	<input type="checkbox"/> OTHER

Check Your Preference for New or Renewal Membership:

Regular Member: Any person who meets the above requirements and is age 18+. An Active Regular Member shall be entitled to hold office, vote, and enjoy all benefits & privileges	\$55.00	NEW	Renewal
Associate Member (Non-Voting): A spouse and/or family member(s) of a Regular Member who meets the above criteria. Can use range key. One fee includes spouse and all junior family members.	\$10.00		
Lost Key Charge: Replacing personal key access to Outdoor Range	\$15.00		
TOTAL AMOUNT PAID			

- Dues are not pro-rated
- Annual Dues effective March 1st – Feb 28th
- **MANDATORY: Current NRA Membership #** _____ **Exp Date** _____

Please print legibly and fill out completely. (4CRP does not sell or share this information)

FIRST AND LAST NAME	TELEPHONE (Required)		DATE OF BIRTH
MAILING ADDRESS	CITY	STATE	ZIP

ASSOCIATE MEMBER NAME (PAID)	ASSOCIATE NRA MEMBER NUMBER/EXP DATE (Required)		
RELATIONSHIP TO MEMBER	DATE OF BIRTH	TELEPHONE	

JUNIOR MEMBER NAME	NRA MEMBER NUMBER/EXP DATE	DATE OF BIRTH

EMAIL: _____

(Email required: needed for sending specific club information ONLY; we really want to keep you informed!)

Please check box for Crack Shot Newsletter preference:

- If you would like printed Newsletter mailed to you
- If you would like the Newsletter emailed to you

I acknowledge that I have received a copy of, have read, and agree to comply with the 4CRP Outdoor Range Use and Safety Rules

Signature: _____ **Date:** _____

To Be Completed by Secretary

Card Sent: _____

Key Sent: _____

Key from: Choice _____ RDF: _____ Secretary Signature: _____

FOUR CORNERS RIFLE AND PISTOL CLUB (4CRP) OUTDOOR RANGE USE AND SAFETY RULES

As a member of 4CRP Club (herein referred to as “Club”), you agree, upon penalty of loss of membership, to abide by established practices of Range use and safe gun handling. Your membership in the Club depends upon your ability to follow the safety rules described here. ALL SHOOTERS UNDER THE AGE OF 18 YEARS MUST HAVE DIRECT ADULT SUPERVISION.

Everyone at Club Ranges is equally responsible for safety. If you see an unsafe or potentially unsafe situation occurring, holler, “**STOP!**” After the issue is resolved, give the “All clear--the line is hot” command.

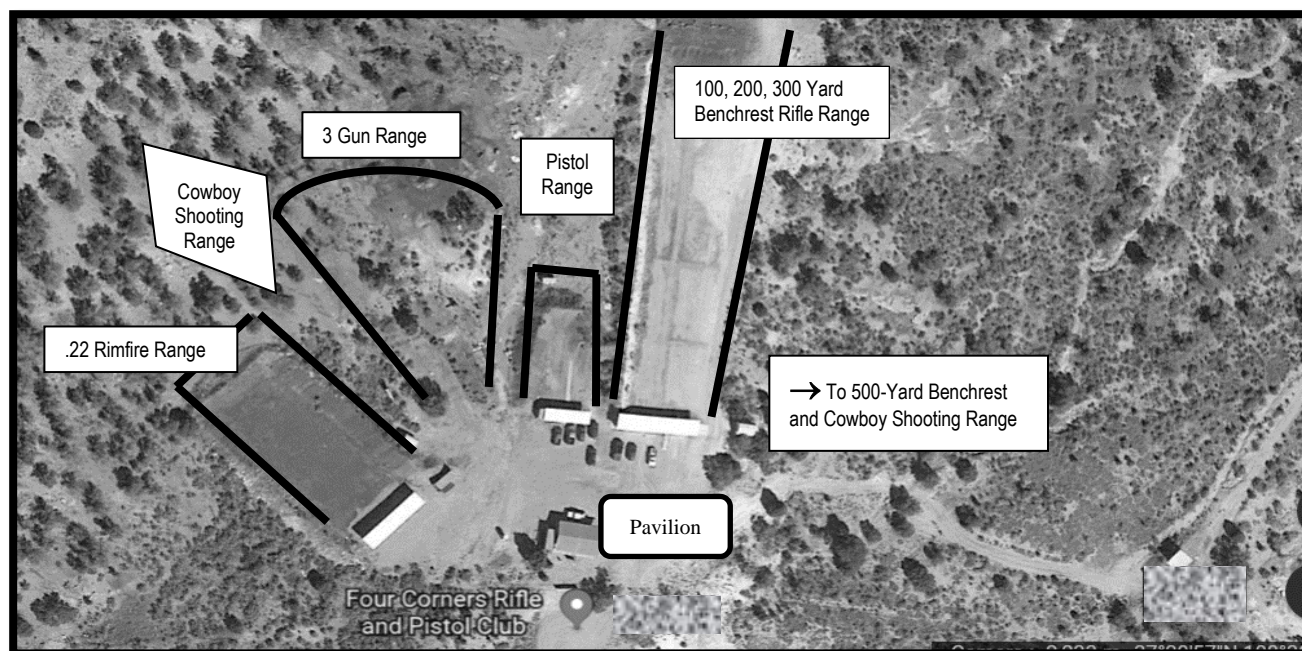
We have various shooting ‘Ranges’ at the Outdoor Range that are available for use by members and accompanied guests:

1. **22 Rimfire:** This Range is designed for safe use only with standard 22-rimfire ammunition, specifically: *Short, Long, and Long Rifle*. The use of any rimfire magnum ammunition or centerfire ammunition, of any kind, is **prohibited** on the 22 Rimfire Range.
2. **Rifle Benchrest** (with gong targets at 500 yards): This Range has hanging gong targets of various sizes. These are thick enough to allow use with anything of less power and penetration potential than 50 BMG armor piercing. **Do not** deliberately shoot at the surrounding wooden structure.
3. **Rifle Benchrest** (with target berms at 100, 200, and 300 yards—the hillside at the far end is past 300 yards): This Range has steel gong targets at various distances. The 100-yard berm has been designed to allow firing at targets at any distance up to 100 yards so long as the target backer places the target at a height that assures subsequent impact into the berm. This Range also has various steel gong targets; do not shoot at these with any gun having more power and velocity than a conventional 30-caliber belted magnum (300 Win Mag, etc.).
4. **Pistol** (with a berm at about 20 yards): To prevent bullets ricocheting out of the confinement zone, this Range requires use of our target backers, or reaction targets placed at a similar height.
5. The 3 Gun Shoot Range and the two Range areas used by the Cowboy Shooters are not available for unsupervised Club member use. These areas are identified by signage.

Note: The Pistol and Rifle Benchrest Ranges have storage rooms at the left end of the shooting lines. These hold target backers, stools, and various supplies along with brooms and trash bags.

4CRP Outdoor Range Layout

NORTH



Hwy 160

OUTDOOR RANGE RULES INCLUDE, BUT ARE NOT LIMITED TO, THE FOLLOWING:

- **TREAT ALL GUNS AS IF THEY ARE LOADED AT ALL TIMES**
- **NEVER POINT ANY GUN AT ANYTHING YOU DO NOT INTEND TO DESTROY OR PAY FOR**
- **KEEP YOUR FINGER OFF THE TRIGGER UNTIL YOU ARE READY TO SHOOT**
- **BE AWARE OF YOUR TARGET, ITS BACKSTOP AND BEYOND**
- Always wear eye and ear protection when on or near the shooting line.
- Use of the Outdoor Range is limited to daylight hours. On occasion, various Club activities require closure of one or more of the shooting ranges. We announce these closures ahead of time in the Club Newsletter, through emails, and on the Club Website.
- Guests at the Range must be accompanied by the Member and more than five guests at one time should be coordinated with the Range Officer.
- At all times while on any of the Club Ranges, unless the gun is in your hand(s) and it is aiming toward the target, it must be: unloaded, with the action open, and with the barrel pointed in a safe direction.
- Rifles resting in the provided gun racks must have the action open and the magazine removed, or have an empty-chamber indicator flag inserted into the chamber.
- Never fire any gun that may not be safe to operate. Never use ammunition not designed for use in the gun you are firing. Never place your finger on the trigger until you are ready to shoot.
- Never fire any gun when you do not have it aimed at a specific target that is within the zone of **acceptable** target placement as noted at this Range.
- **Never insert a cleaning rod or ramrod into the bore of any gun on the shooting bench; open the action, remove the magazine, and move the gun to a cleaning table.**

Acceptable target placement includes:

- ❖ *Clay pigeons* near the middle elevation of the berms and toward the bottom of the 300-yard hillside,
- ❖ *Paper targets* on the target backers,
- ❖ *Reaction targets* designed to safely deflect bullets downward or to dissipate most of the energy (when used according to the manufacturer's criteria, but only when elevated so that misses hit the berm). If in doubt, do not use it!

Unacceptable target placement includes:

- Anywhere on or near the ground between the shooting line and the bottom of the target berm;
- On or near the top of any berm; more than halfway up the hillside behind the 300-yard shooting line;
- Or so that shooting could result in a bullet escaping sideways from the Range.

NOTE: Members and their guests will make all reasonable efforts not to destroy the target backers. Avoid shooting into the support structure or the wood frames.

PROHIBITED AT THE OUTDOOR RANGE

- Fully automatic guns.
- Armor piercing or tracer ammunition. If in doubt, do not shoot it.
- The use of any military ammunition with any color paint on the bullet tip.
- Use of Club target backers for shotgun use—bring and use your own target backers for shotgun use.

CLEAN UP

Pick up and dispose your trash and empty shotgun hulls in the trash cans provided at various locations at each Range or the trash dumpster. Spent brass casings should be swept from the cement pads.

MEMBER PLEDGE

We expect our members and their guests to strive toward absolute safety at all times, and at all costs. This means following the rules described herein and all other rules of safe gun handling and use. When it comes to gun-handling, bad habits can and do lead to tragedy. Your failure to abide by these rules may constitute just cause to revoke your membership. Members are equally responsible for the safety and Range-rule related actions of their guests. Any revoked membership will result in forfeiture of your entire annual membership fee, Range key and loss of use of the Club Ranges, *including shooting at the Range as another member's guest.*